

SMART PLUG

USER'S GUIDE FOR MODEL AWP138



SUPERCONN APP DOWNLOAD

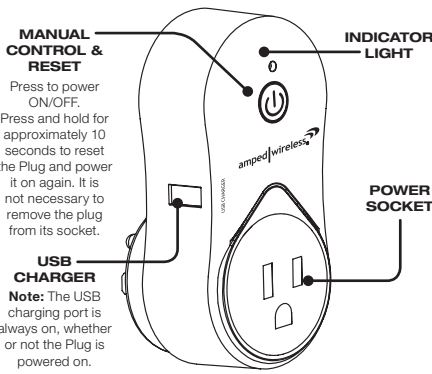
- Scan the QR code with your Android or Apple device, or search “**SuperConn**” in the Google Play Store or Apple App Store.
- Open the app and login to your account. **If this is your first time using the app, you will need to register and create an account.**



ANDROID



APPLE



MANUAL CONTROL & RESET
Press to power ON/OFF.
Press and hold for approximately 10 seconds to reset the Plug and power it on again. It is not necessary to remove the plug from its socket.

USB CHARGER
Note: The USB charging port is always on, whether or not the Plug is powered on.

ELECTRICAL RATINGS

Do not exceed specified electrical ratings.

Input: AC 125V, 50/60 Hz

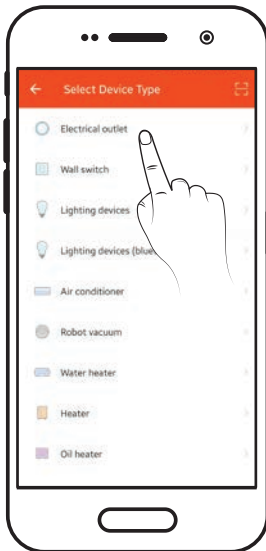
Max Rating: 10A

USB: DC 5V, 1.5A

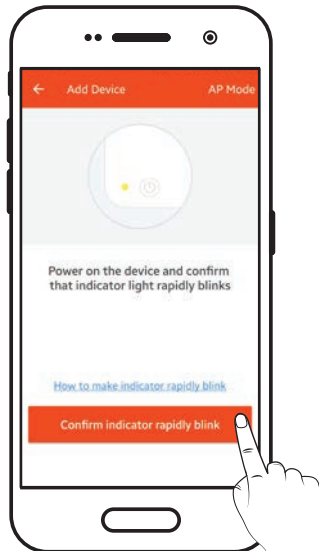
Smart Plug Status	Indicator Light
Power ON (connected to Wi-Fi)	Solid Blue
Connecting to Wi-Fi	Flashing Red
Power OFF	Solid Red

SMART PLUG SETUP

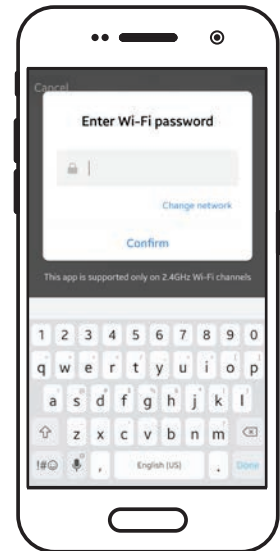
1. Plug the Smart Plug into an outlet and press and hold the **Power** button until the LED begins flashing red, indicating it is ready to connect to your Wi-Fi network.
2. Open the app, go to **Devices** and click **+** in the top right corner to add the Smart Plug.
3. Select the **Electrical Outlet** in the menu and follow the prompts to connect the Smart Plug to your network.
4. After connecting to your Wi-Fi network, the screen will display the Smart Plug's connection status. When it reaches 100%, setup is complete and the Smart Plug is ready to use. Click **Done** to finish.
5. Return to the **Devices** menu to manage your Smart Plug and any other smart linked devices you may have.



SELECT ELECTRICAL OUTLET FROM THE LIST OF DEVICES.



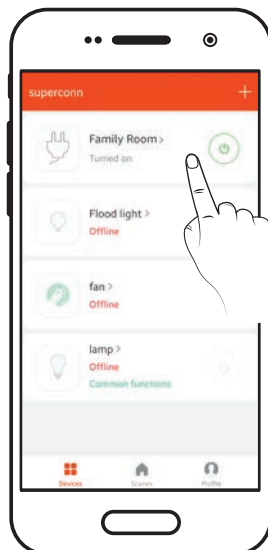
WHEN THE LED ON THE SMART PLUG IS FLASHING BLUE, PRESS CONFIRM.



ENTER WI-FI PASSWORD.



THE SMART PLUG IS READY TO USE WHEN THE STATUS REACHES 100%.



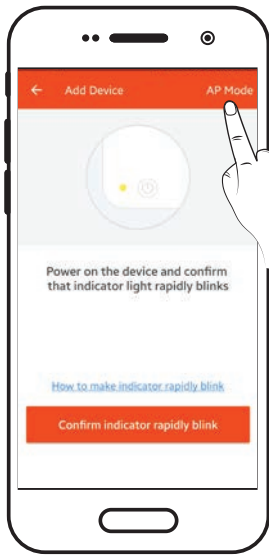
FROM THE DEVICE MENU, SELECT THE SMART PLUG (RENAMED “FAMILY ROOM” ABOVE).



THIS IS THE CONTROL SCREEN. HERE YOU CAN TURN THE PLUG ON, SET TIMERS AND SCHEDULES, AND ADJUST SETTINGS.

DID THE PLUG FAIL TO CONNECT?

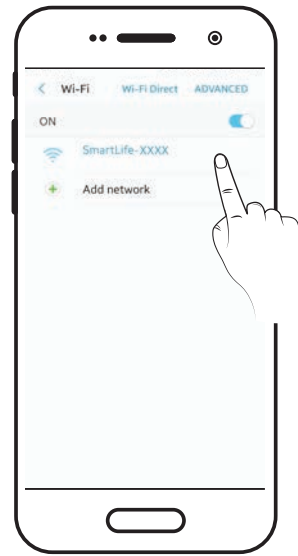
If the app fails to connect to the Smart Plug, it will attempt to connect from your phone's Wi-Fi settings menu. **Android devices (as below) will do this automatically, Apple products will ask you to exit the app and go to Settings > Wi-Fi.** After the connection is established, proceed as normal to finalize and begin using the Plug.



SELECT AP MODE.



SELECT CONNECT NOW TO PROCEED TO YOUR ANDROID PHONE'S WI-FI SETTINGS MENU. APPLE IOS USERS, EXIT THE APP AND MANUALLY ACCESS YOUR WI-FI SETTINGS MENU.



CONNECT TO THE SMART PLUG, THEN RETURN TO THE APP. THE CONNECTION PROCESS WILL BEGIN IMMEDIATELY. NOTE THAT IT MAY TAKE A FEW MOMENTS TO CONNECT.

SAFETY & SUPPORT INFORMATION

SAFETY WARNINGS

- **WARNING:** To prevent fire or shock hazards, do not expose this unit to rain or moisture.
- Clean only with a dry cloth. Do not clean with liquid cleaners or damp cloth.
- Do not use with devices that should not be used unsupervised.
- **CAUTION: TO REDUCE THE RISK OF ELECTRIC SHOCK, USE ONLY INDOORS.**
- Do not use in a bathroom or other location where it may come into contact with water or splashing.
- **WARNING:** Where the mains plug or appliance coupler is used as the disconnect device, such disconnect device shall remain readily operable.
- Risk of electric shock. Grounding continuity must be maintained.
- To prevent injury, this apparatus must be securely attached to the wall in accordance with the installation instructions.
- The Wi-Fi plug may not work properly if there is radio frequency interference. You may be required to reset the Wi-Fi plug should this occur.



WARNING: This product can expose you to chemicals including lead, which is known to the State of California to cause cancer and birth defects or other reproductive harm. For more information go to www.P65Warnings.ca.gov. **This product meets and complies with all Federal regulations.**

FCC WARNINGS

Warning: Changes or modifications to this unit not expressly approved by the party responsible for compliance could void the user's authority to operate the equipment.

NOTE: This equipment has been tested and found to comply with the limits for a Class B digital device, pursuant to Part 15 of the FCC Rules. These limits are designed to provide reasonable protection against harmful interference in a residential installation. This equipment generates, uses, and can radiate radio frequency energy and, if not installed and used in accordance with the instructions, may cause harmful interference to radio communications. However, there is no guarantee that interference will not occur in a particular installation. If this equipment does cause harmful interference to radio or television reception, which can be determined by turning the equipment off and on, the user is encouraged to try to correct the interference by one or more of the following measures:

- Reorient or relocate the receiving antenna.
- Increase the separation between the equipment and receiver.
- Connect the equipment into an outlet on a circuit different from that to which the receiver is connected.
- Consult the dealer or an experienced radio/TV technician for help.

DISCLAIMERS

Amped Wireless makes all attempts in providing accurate information on all media. However, Amped Wireless makes no warranty as to the accuracy of the information, including representations and warranties about the accuracy of product specifications, marketing material, product availability, new product launch dates and all other content herein. Amped Wireless reserves the right to update and change information without prior notice. All information provided is provided "AS IS" with all faults without warranty of any kind. Either expressed or implied. Amped Wireless and its suppliers disclaim all warranties, expressed or implied including, without limitation, Amped Wireless and its suppliers shall not be liable for any indirect, special, consequential, or incidental damages including, without limitation, lost profits or revenues, cost of replacement goods, loss or damage to data arising out of the use or inability to use any Amped Wireless product, damages resulting from use or reliance on information present, even with prior notice to Amped Wireless. All non-Amped Wireless trademarks, logos, brands and products are trademarks

or registered trademarks of their respective owners. Amped Wireless does not claim any relation. Mention of non-Amped Wireless products and brands are for information purposes only and does not constitute an endorsement or affiliation.

Warranty Period: The Amped Wireless Limited Warranty is for one (1) year from the date of purchase for new products. Refurbished products carry the Limited Warranty for thirty (30) days after the date of purchase. In the event that you have a problem with this product, please go to www.ampedwireless.com/support.

Elite Support International: +1-909-217-3168

Elite Support Toll Free: 888-573-8820

Email: techsupport@ampedwireless.com

Website: www.ampedwireless.com

Support Website: www.ampedwireless.com/support

© 2017 Amped Wireless / Newo Corporation. All rights reserved. Amped Wireless, Newo Corporation, and the Amped Wireless logo are registered trademarks or trademarks of Newo Corporation. All non-Amped Wireless trademarks, logos, brands and products are trademarks or registered trademarks of their respective owners. Amped Wireless does not claim any relation. Mention of non-Amped Wireless products and brands are for information purposes only and does not constitute an endorsement or affiliation.