



— READ FIRST —

High Power Wireless-N Directional Dual Band USB Adapter

UA2000

IMPORTANT:

DO NOT INSERT THE USB ADAPTER UNTIL THE DRIVER HAS BEEN INSTALLED

1 Insert the Setup CD



2 Install Software

The menu page should appear.

Follow the instructions for your operating system below and install the driver for the USB Adapter.

Windows Instructions: This Side
Mac Instructions: Back Side

Do not insert the USB Adapter until after the software/driver has been fully installed.

3 Follow the Instructions for your Operating System:

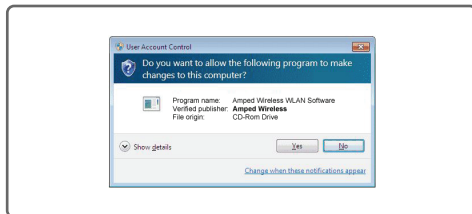
Windows 7 and Vista

A. From the menu page, select **Install Software**



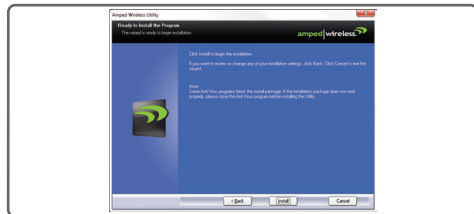
If the menu page does not appear, browse the CD drive and double-click the **Autoload.exe** file.

B. Start the Driver/Utility Installation



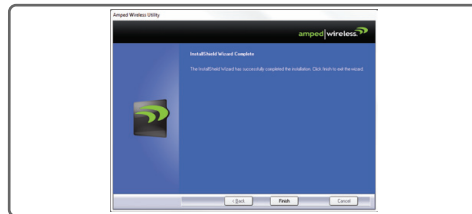
If prompted, click **Yes** to begin the installation.

C. Continue the Driver/Utility Installation



Follow the instructions that appear and click **Install** to continue the installation.

D. Complete the Driver/Utility Installation



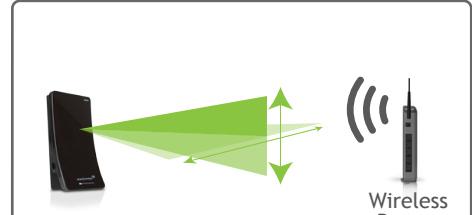
Once the installation has completed, click **Finish**. If prompted to restart, please do so at this time.

E. Insert the High Power USB Adapter



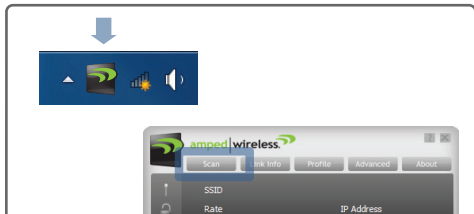
Locate two available USB ports and insert the USB Adapter. Windows should automatically begin installing the driver for use with the USB Adapter. If only one USB port is available, insert the USB connector labeled **Primary**.

F. Position the Directional Antenna



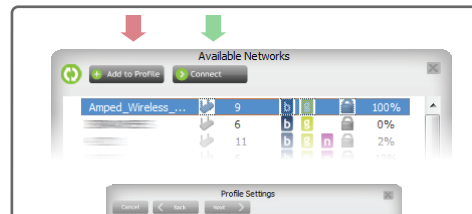
For optimal performance, position the face of the adapter towards the direction of your wireless network.

G. Connect to a Wireless Network



Locate the **Amped Wireless Utility** icon in the Windows System tray (bottom right hand corner) and click it to open the Utility. Click **Scan** to view available networks.

H. Connect to a Wireless Network



Select your network from the list and click **Connect**, or **Add to Profile**, to have your PC automatically connect to this network when it is available. If your network has security enabled, you will be prompted to enter it.

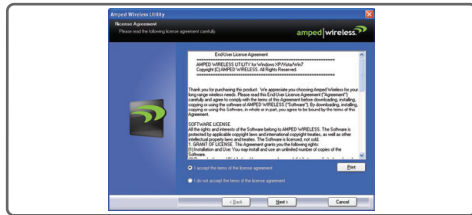
Windows XP and 2000

A. From the Menu page, select **Install Software**



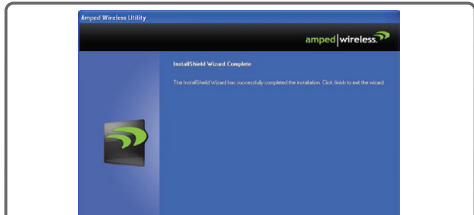
If the Menu page does not appear, browse the CD drive and double-click the **Autoload.exe** file.

B. Start the Driver/Utility Installation



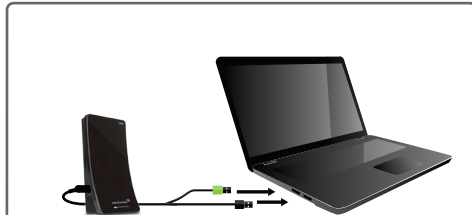
Click **Next** to begin the installation. Follow the instructions that appear and click **Install** to continue.

C. Complete the Driver/Utility Installation



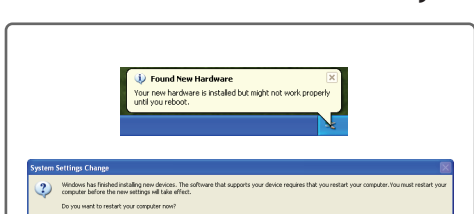
Once the installation has completed, click **Finish**.

D. Insert the High Power USB Adapter



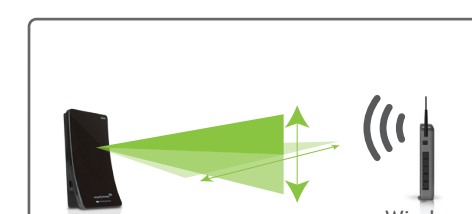
Locate two available USB ports and insert the USB Adapter. Windows should automatically begin installing the driver for use with the USB Adapter. If only one USB port is available, insert the USB connector labeled **Primary**.

E. Found New Hardware / Restart your PC



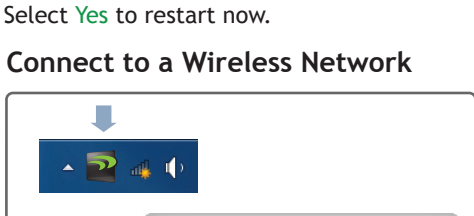
Windows will automatically find the High Power USB Adapter and begin installing the software. After the installation has completed, a prompt will appear asking you to restart your PC. Select **Yes** to restart now.

F. Position the Directional Antenna



For optimal performance, position the face of the adapter towards the direction of your wireless network.

G. Connect to a Wireless Network



After your computer has fully rebooted, locate the **Amped Wireless Utility** icon in the Windows System tray (bottom right hand corner) and click it to open the Utility. Click **Scan** to view available networks.

H. Connect to a Wireless Network

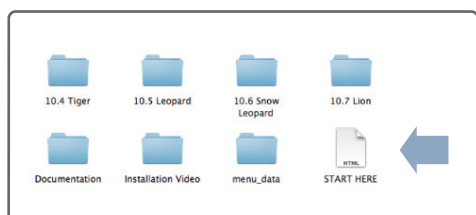


Select your network from the list and click **Connect**, or **Add to Profile**, to have your PC automatically connect to this network when it is available. If your network has security enabled, you will be prompted to enter it.

Adjust the direction of the USB adapter to find the optimal position.

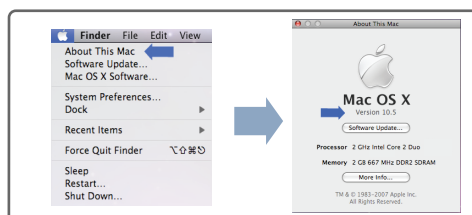
Mac OS X

A. Access the Menu



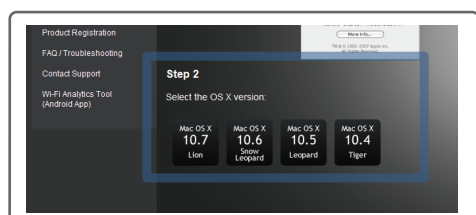
From the autoloader page, click on [Start Here](#) to open the Menu. If the menu does not load browse the CD to find the Start Here file.

B. Find your Operating System Version



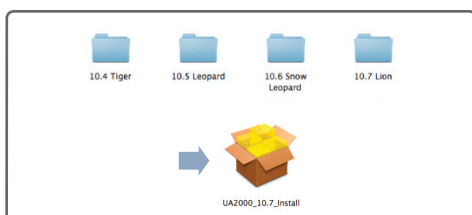
Click on the [Apple Icon](#) (upper-left corner). Select [About This Mac](#) and note the Mac OS X Version.

C. Select your Operating System



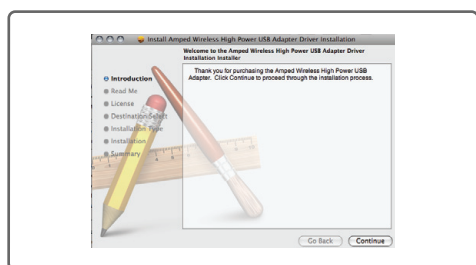
From the Menu, select the software version that your Mac is using to begin installing the software.

D. Find the Folder on the Setup CD



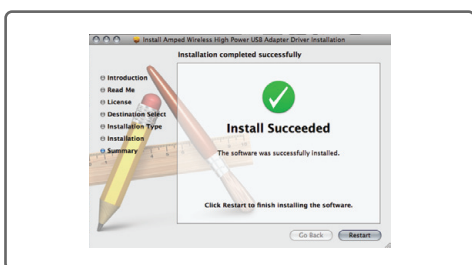
Open your OS X version folder and then click the install file to begin the installation.

E. Install the Software



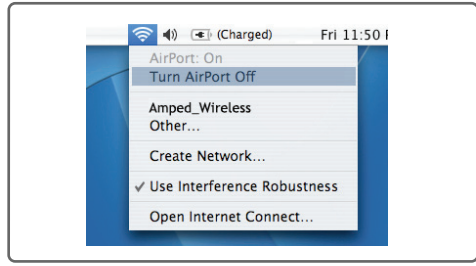
Follow the instructions and click [Continue](#) to install the software. If prompted, select a destination for the driver software. This is typically the Macintosh HD. Click [Continue](#).

F. Restart your Computer



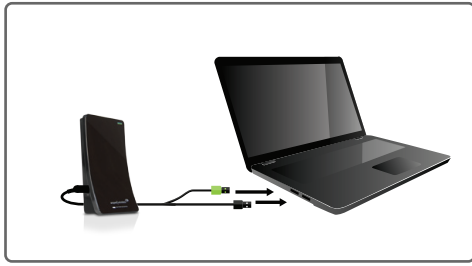
When the software has installed, you will be asked to restart your Mac. Click [Restart](#) to reboot your computer.

G. Turn Off Your AirPort Card



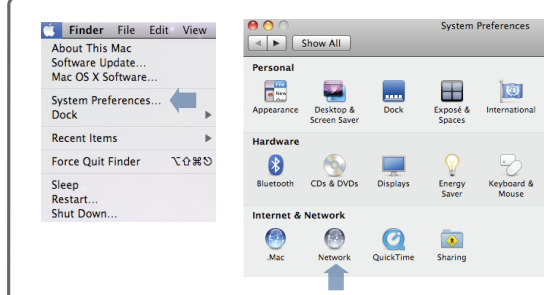
After the computer reboots, disable any AirPort cards by selecting the wireless icon (upper right-corner) and select [Turn AirPort Off](#). If you do not have an AirPort Card continue to Step H.

H. Insert the High Power USB Adapter



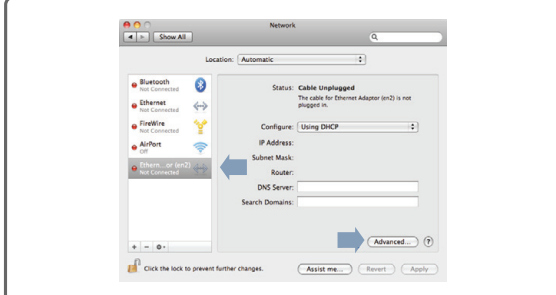
Once all AirPort cards are disabled, insert the High Power USB Adapter into your USB port. Locate two available USB ports and connect the adapter to your computer. If only one USB port is available, only insert the USB connector labeled [Primary](#).

I. Activate the USB Adapter



You may be prompted to activate your USB Adapter in Network Preferences. If not, select the [Apple Button](#) (upper left corner), and then select [System Preferences](#) from the menu. From there, select [Network](#).

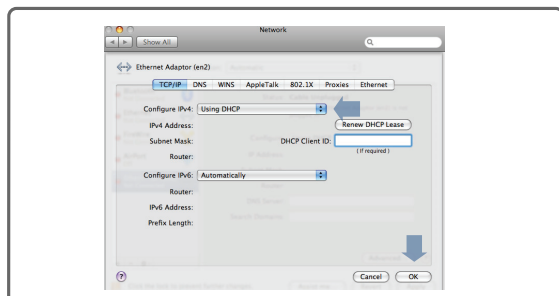
J. Activate the USB Adapter



For OS X 10.4 Tiger and 10.5 Leopard:
Select [Ethernet Adapter \(en#\)](#) and click [Advanced](#).
[Continue to Step K](#)

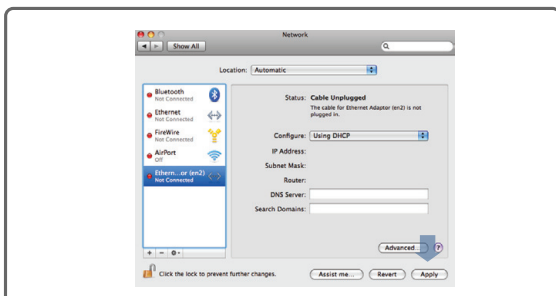
For OS X 10.6 Snow Leopard and 10.7 Lion:
Select [Amped Adapter](#) and click [Apply](#).
[Continue to Step M](#)

K. Activate the Adapter (OSX 10.4/10.5 Only)



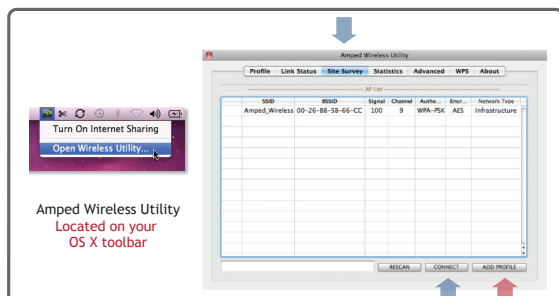
In the Advanced menu, check that the adapter is [Using DHCP](#) and then click [OK](#).

L. Activate the Adapter (OSX 10.4/10.5 Only)



Click [Apply](#) to activate your USB Adapter.

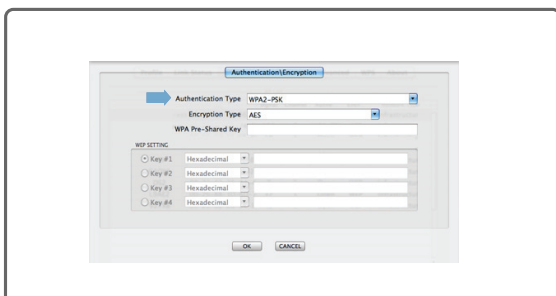
M. Connect to a Wireless Network



The Amped Wireless Utility should automatically load. **If it does not load, click the Amped Wireless Utility icon to load the utility.** Select the [Site Survey](#) tab to view nearby wireless networks. Highlight your desired network and click [Connect](#).

Note:
Click [Add to Profile](#) after highlighting your network to save it and have the Utility connect automatically when in range.

N. Connect to a Wireless Network



If your network has security enabled, enter the security key here. Click [OK](#) to begin using your new wireless adapter.

Using the Laptop Clip

Locate the laptop clip and fasten it to the back of the USB Adapter.

Mount the USB Adapter onto your laptop screen for added convenience and portability.

Using the Adapter with only One USB Connector

The High Power Wireless-N Directional Dual Band USB Adapter features two USB connectors for providing the maximum performance the power of two USB ports. However, in the case that you wish to only use one USB connection, simply insert only the USB connector labeled "PRIMARY." For full range and performance the USB connector labeled "AMPED" must also be inserted.

Position the Directional Antenna

The USB Adapter has a directional antenna to provide more Wi-Fi range. Position the face of the USB adapter towards the source of your Wi-Fi network to maximize range and performance.



AMPED
PRIMARY