



High Power 802.11ac Wi-Fi USB Adapter

UA230A

1 Insert the Setup CD

No CD drive? Download the drivers here:
<http://www.ampedwireless.com/support/model/ua230a.html>



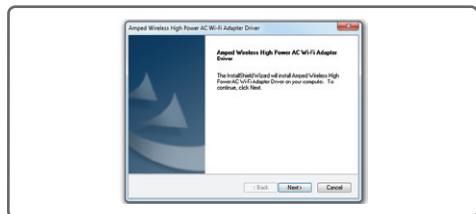
3 Windows Driver installation

A. From the Menu page, select **Install Software**



If the Menu page does not appear, browse the CD drive and double-click the **Autoload.exe** file.

C. Continue the Driver Installation



Follow the instructions that appear and click **Next** to continue the installation.

E. Insert the High Power USB Adapter



After the computer has fully rebooted, locate a USB port and insert the USB Adapter.

2 Install Software

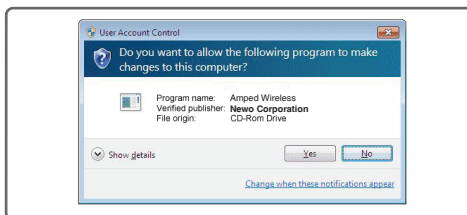
The menu page will appear.

Select the instructions for your operating system, below, and install the driver for the USB adapter.

Windows Instructions: This Side
Mac Instructions: Back Side

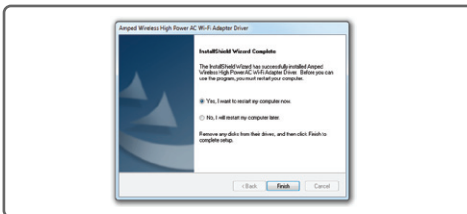
Do not insert the USB Adapter until after the software/driver has been fully installed.

B. Start the Driver installation



If prompted, click **Yes** to begin the installation.

D. Restart your Computer



A prompt will appear asking you to restart your computer. Select **Yes** and click **Finish** to restart.

4 Connect to a Wi-Fi Network

a Select the Wi-Fi icon on your Windows desktop taskbar.

b If your PC has a previously installed Wi-Fi adapter, your new Amped Wi-Fi adapter should appear as **Wi-Fi 2** or **Wireless Network Connection 2**.

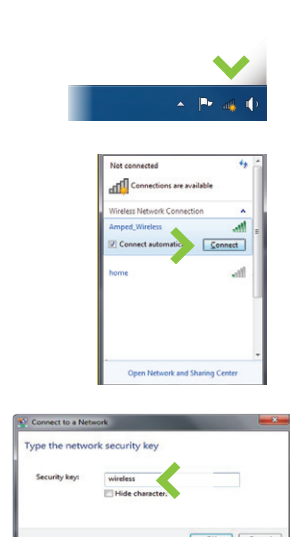
Your original Wi-Fi adapter will be labeled as **Wi-Fi (1)** or **Wireless Network Connection**.

c Choose any network under **Wi-Fi 2** or **Wireless Network Connection 2** to connect to and enter the security key, if prompted.

Windows 8



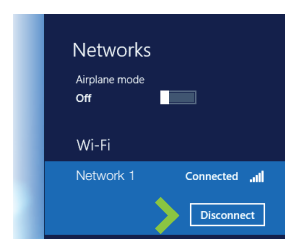
Windows 7 & XP



5 Disconnect your original Wi-Fi Adapter from any Wi-Fi Networks

If your PC is connected to a Wi-Fi network using the original embedded Wi-Fi adapter, you will need to disconnect it.

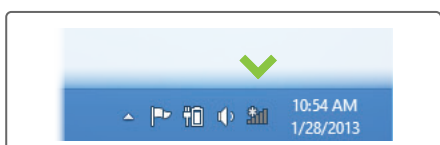
In the Networks tab, disconnect from any networks listed under the embedded Wi-Fi adapter **Wi-Fi (1)** not **Wi-Fi 2**.



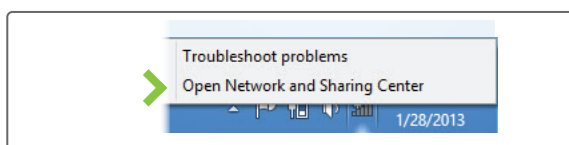
Optional: Disable the Embedded Wi-Fi Adapter [Wi-Fi (1)]

Disabling Wi-Fi (1) will stop it from showing up in your Wi-Fi available list of networks. This is not permanent. You can re-enable it by following Step E, below.

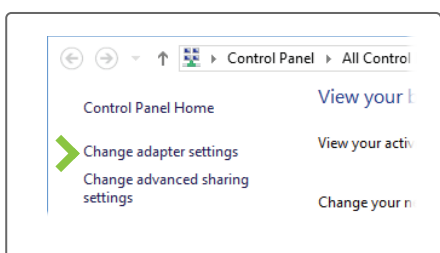
a Go to the Windows 8 desktop and find the Wi-Fi icon.



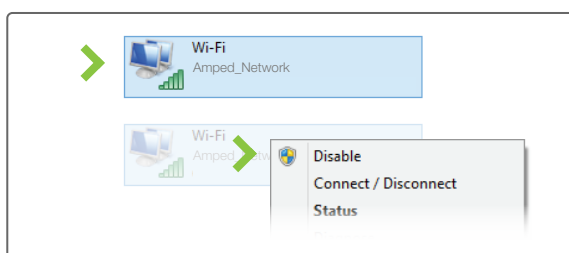
b Right-click on the Wi-Fi icon in the taskbar and select **Open Network and Sharing Center**.



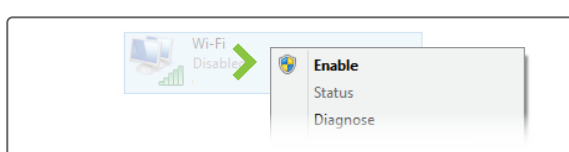
c Select **Change Adapter Settings** from left side.



d Find your Wi-Fi icon (Not Wi-Fi 2), right-click it and **Disable** from the dropdown menu.



e To re-enable your original Wi-Fi adapter, follow the same steps above and click **Enable** at Step D instead of **Disable**.

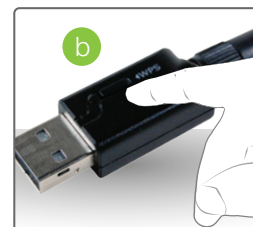


Wi-Fi Protected Setup (WPS, One-Touch Setup, or Push Button Configuration)

If your Wi-Fi network (router) supports WPS one-touch setup, you can use the WPS button on the Adapter to connect to your network. This is an alternate setup method to steps 1-5, above. You do not need to do both WPS and steps 1-5.

a Initiate WPS setup by pressing and holding the WPS button on your router for 3 seconds. The WPS LED should begin to blink.

b As it blinks, push the WPS button on the UA230A Wi-Fi Adapter. WPS will automatically configure the connection settings for the UA230A to connect to your Wi-Fi network (router).

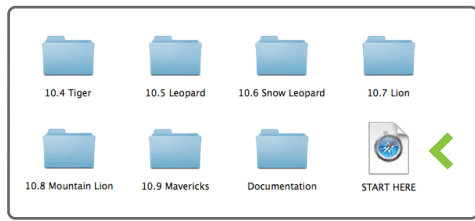


Indicators and Buttons



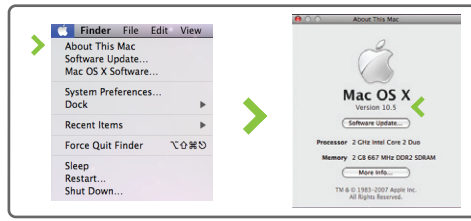
Mac OS X Software Installation

A. Access the Menu



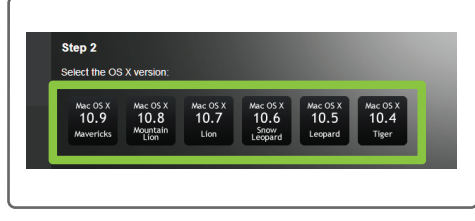
From the autoload page, click on [Start Here](#) to open the menu. If the menu does not load, browse the CD to find the Start Here file.

B. Find your Operating System version



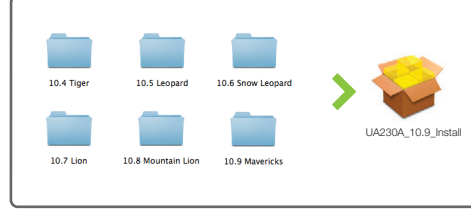
Click on the [Apple icon](#) (upper-left corner). Select [About This Mac](#) and note the Mac OS X version.

C. Select your Operating System



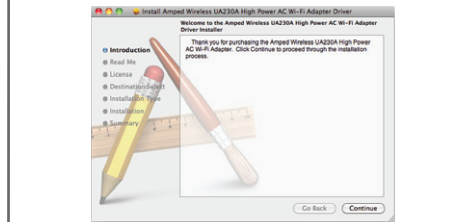
From the CD Menu, select the OS X version that your Mac is using to begin installing the software (i.e. 10.4 through 10.9).

D. Find the Folder on the Setup CD



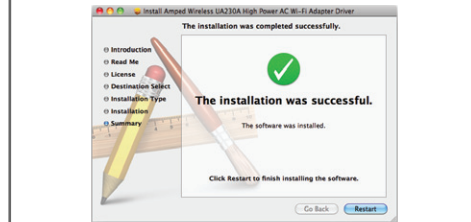
Open your OS X version folder, and then click [Installation file](#) to begin the installation.

E. Install the Software



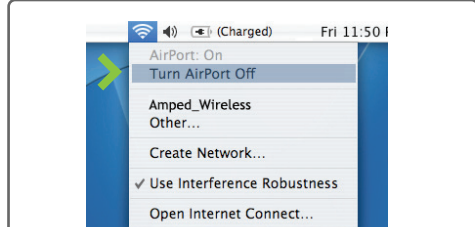
Follow the instructions and click [Continue](#) to install the software. If prompted, select a destination for the driver software. This is typically the Macintosh HD. Click [Continue](#).

F. Restart your Computer



When the software has installed, you will be asked to restart your Mac. Click [Restart](#) to reboot your computer.

G. Turn Off Your AirPort Card



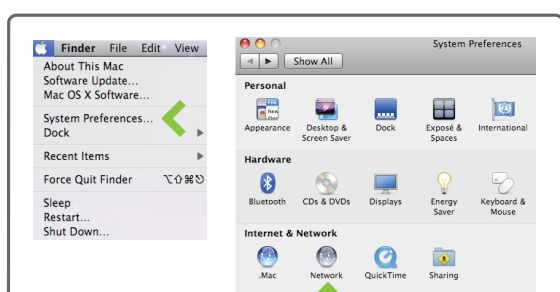
After the computer reboots, disable any AirPort cards by selecting the wireless icon (upper right-corner) and select [Turn AirPort Off](#). If you do not have an AirPort card continue to Step H.

H. Insert the High Power USB Adapter



Once all AirPort cards are disabled, insert the High Power USB Adapter into your USB port.

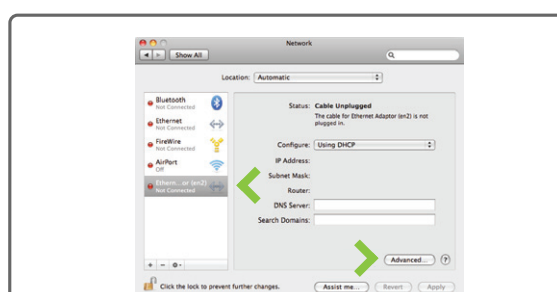
I. Activate the USB Adapter



You may be prompted to activate your USB Adapter in Network Preferences. If not, select the [Apple icon](#) (upper-left corner) and select [System Preferences](#) from the drop-down list. From there, select [Network](#).

OS X 10.8 and 10.9 users can skip to Step M.

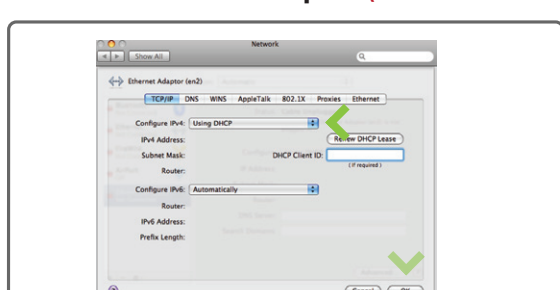
J. Activate the USB Adapter



For OS X 10.4 Tiger and 10.5 Leopard: Select [Ethernet Adapter \(en#\)](#) & click [Advanced](#). Continue to Step K

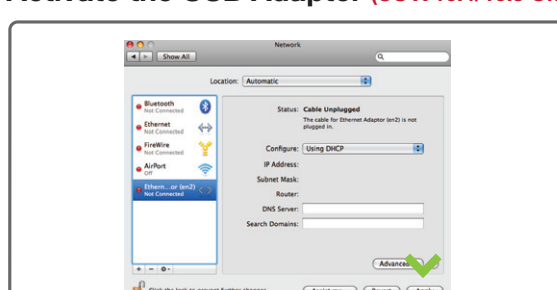
For OS X 10.6 Snow Leopard and 10.7 Lion: Select [Amped Adapter](#) & click [Apply](#). Continue to Step M

K. Activate the USB Adapter (OS X 10.4/10.5 Only)



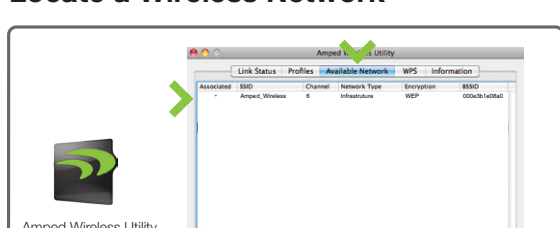
In the Advanced menu, check that the adapter is [Using DHCP](#) and then click [OK](#).

L. Activate the USB Adapter (OS X 10.4/10.5 Only)



Click [Apply](#) to activate your USB Adapter.

M. Locate a Wireless Network



The Amped Wireless Utility should automatically load. **If it does not load, click the Amped Wireless Utility icon to load the utility.** Select the [Available Network](#) tab to view nearby wireless networks. Highlight your desired network and click [Connect](#).

N. Connect to a Wireless Network



If your network has security enabled, enter the security key here. Re-enter it again to confirm. Click [OK](#) to begin using your new wireless adapter.

Troubleshooting Tips

- PROBLEM:** I cannot get the CD menu page to appear.
- SOLUTIONS:**
- Insert the CD into your CD drive (or DVD drive) and click Start, then My Computer. Find your CD or DVD drive and right click it, select Explore or Open. Find the "autoload.exe" file or "Start Here" file and double click it to access the CD menu.
 - Check to see that your CD drive is working correctly by inserting another disk first, then retry the Amped Wireless installation disk.
-
- PROBLEM:** I do not have a CD drive on my computer.
- SOLUTIONS:**
- Connect to the Internet with your computer and download the drivers from the Amped Wireless Support Center: <http://www.ampedwireless.com/support/model/ua230a.html>
 - Unzip the files and find the "setup.exe" file or OS X install file. Double click it to begin the installation of the drivers.
-
- PROBLEM:** No networks appear in the scan results.
- SOLUTIONS:**
- Verify that the adapter is firmly inserted into your USB drive and try to scan for networks again.
 - Check to see that the wireless network you are connecting to is functioning correctly. If possible, locate your wireless router and see that the wireless LED is blinking correctly. If not, check the connection and configuration of your wireless router.
 - Mac Solution: You may need to activate your wireless adapter. Click the Apple icon, select System Preferences, then click Network. Highlight the adapter titled Ethernet Adaptor (en#) for OS X 10.5 and below and click Advanced, then click Apply. For OS X 10.6 to 10.9, select the adapter titled Amped Adapter and click Apply. Try to scan for networks again.
 - Windows Solution: The wireless adapter may be disabled. Go to the Start menu, select Control Panel. Then select Device Manager and locate the Amped Wireless adapter under the Network Adapters category. Right click the Amped Wireless adapter and check to see if it is disabled. If disabled, enable the adapter and try to scan for networks again. If there is a problem with the driver, it will also be displayed here.
 - Uninstall the software by clicking Start, select Control Panel, and then select Programs. Find the Amped Wireless program and uninstall it. Once fully uninstalled, remove the adapter from your USB port, reinstall the Amped Wireless software using the supplied instructions and try again.
-
- PROBLEM:** The Activity LED is blinking, but I cannot access the Internet.
- SOLUTIONS:**
- You may have a mismatch in your SSID or your wireless security key. Double check the security key that you are using for your current wireless connection. Double check that the name of the SSID is the correct name of the network you are trying to connect to.
 - You may have an incorrect IP address assignment.
 - For Windows XP and Vista: Open the Amped Wireless Utility and go to the General tab. Click Renew IP.
 - For Windows 7 and Vista: Open the Windows Wireless Utility by clicking the wireless icon on the bottom right corner. Right click the wireless network that you are connected to and click Status. Click Diagnose to allow Windows to reset your connection.
 - For Mac OS X: Open the Amped Wireless Utility and disconnect from your current network. Wait a few moments and connect again. If this does not work, unplug the USB adapter from your Mac and plug it back in. Connect to your network again and check your Internet connection.
 - The wireless router that you are connecting to may have lost its Internet connection. If possible, check the connection between your router and the ISP.
-
- PROBLEM:** The wireless signal strength is poor.
- SOLUTIONS:**
- Your wireless environment, home or office may have objects that cause wireless interference. Obstructions, such as walls, metal appliances, microwaves, among other things, may cause wireless signal strength to degrade. Try to use the wireless adapter and your wireless router away from these objects.
 - the channel of your wireless network may be congested. Change the channel of your wireless network by configuring the settings on your wireless router. If you have a Windows or Android device, you can download the Amped Wireless Wi-Fi Analytics Tool App to help you find a less congested channel: <http://www.ampedwireless.com/wifianalytics/>

If you continue to have issues setting up the Wi-Fi Adapter, give us a call — we're here to help: 888-573-8820
 Visit our website for more support information and answers to frequently asked questions: www.ampedwireless.com/support